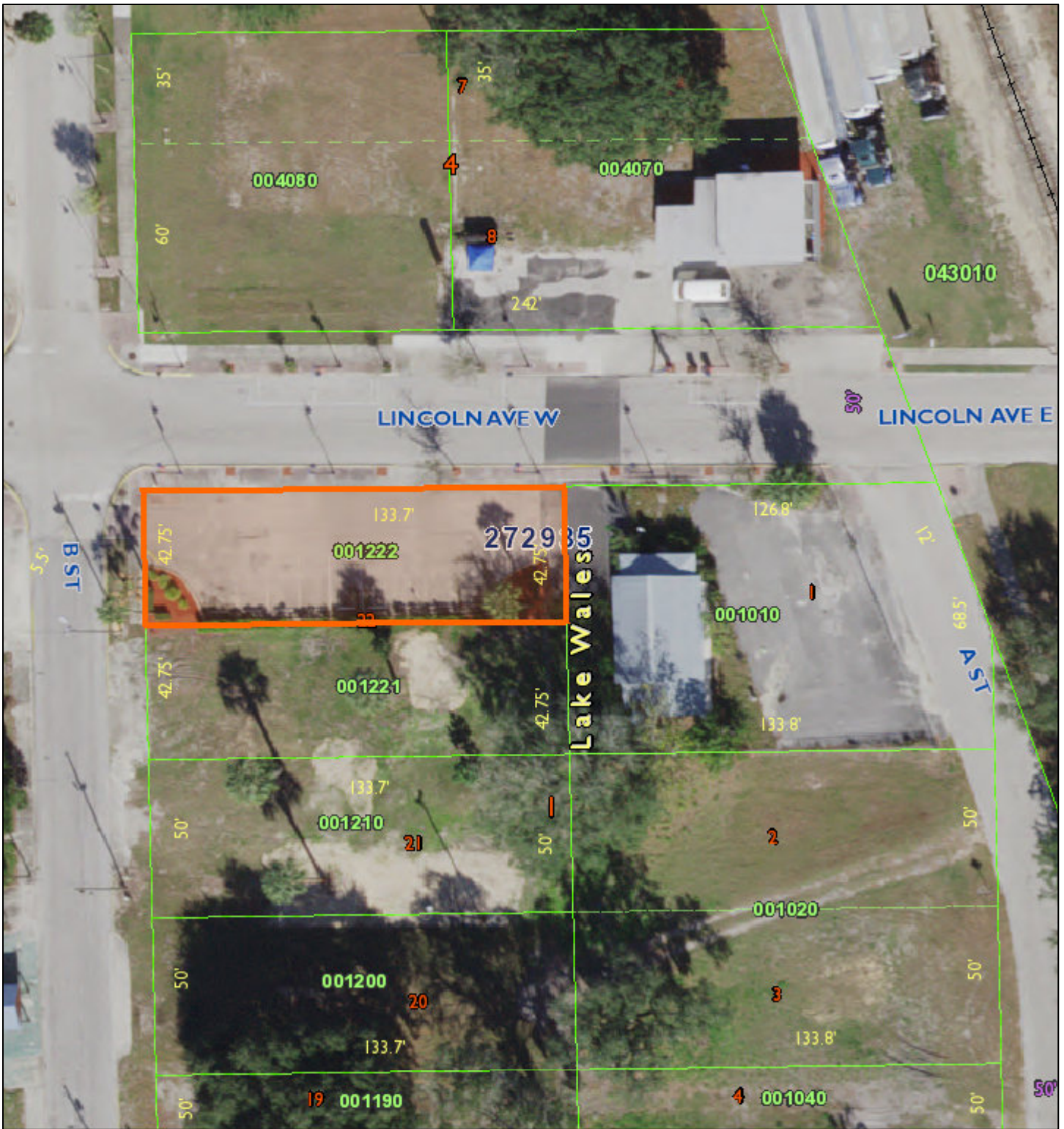
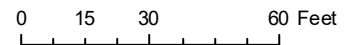


City Owned Property at B Street and Lincon Avenue



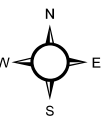
- Selected Parcel
- Roads
- Waterbodies
- Municipal Boundaries
- ⋯ Lots
- ⋯ Lot and Block Text
- ⋯ Blocks
- ⋯ Tiers
- ⋯ Dimensions_ParcelFabric
- ⋯ Dimensions_Carto_Dist
- ⋯ Dimensions_LabelText
- ⋯ Misc Text
- Railroads
- Arrows
- ⋯ Parcels
- ⋯ Surrounding Counties
- PLSS Townships
- ⋯ PLSS Sections
- PLSS Boundaries
- ⋯ Gov't Lots



All maps are worksheets used for illustrative purposes only, they are not surveys. The Polk County Property Appraiser assumes no responsibility for errors in the information and does not guarantee the data is free from error or inaccuracy. The information is provided "as is".



Marsha M. Faux, CFA, ASA
Property Appraiser
Polk County, Florida



August 6, 2021