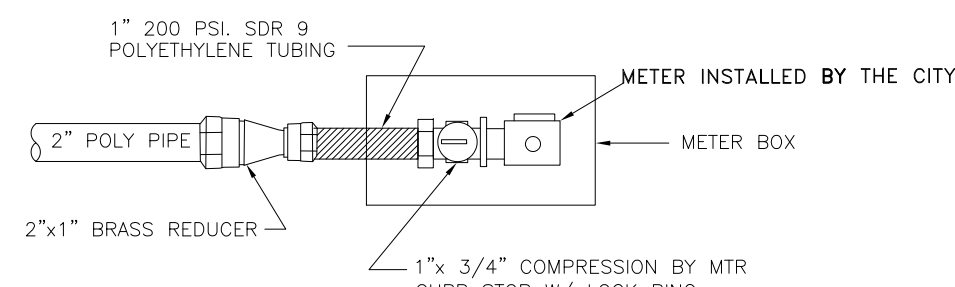
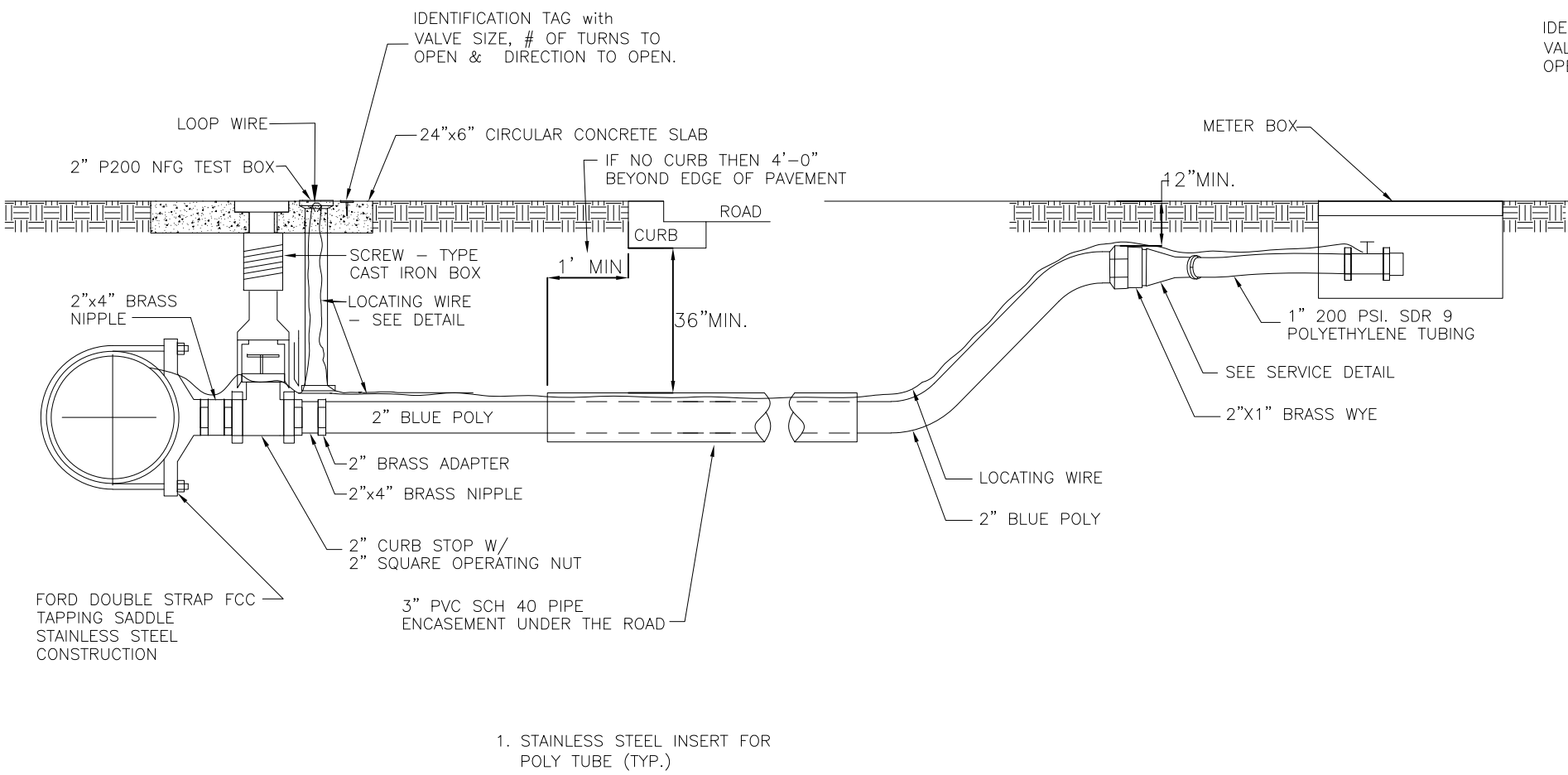


DOUBLE SERVICE PLAN

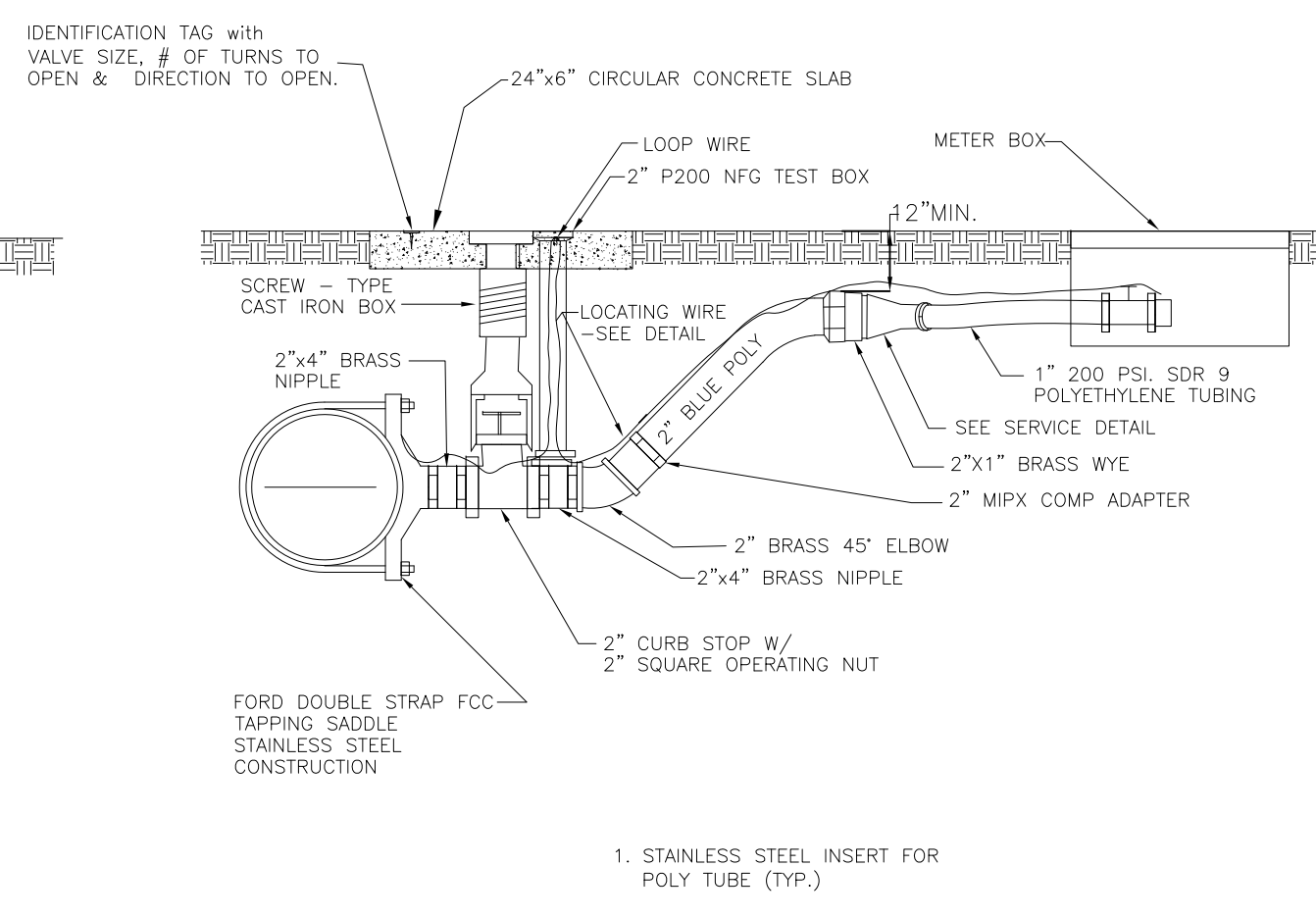


SINGLE SERVICE PLAN

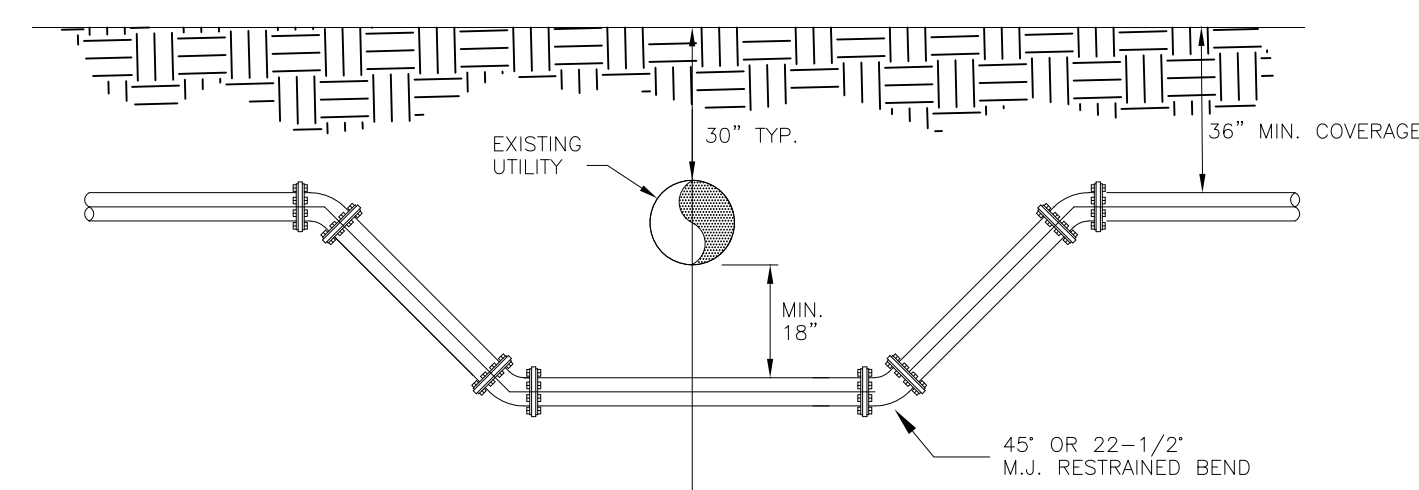
RHINO-METER BOXES
 MB16-BLACK COMPLETE - TR HOLE
 MB18-BLACK COMPLETE - TR HOLE



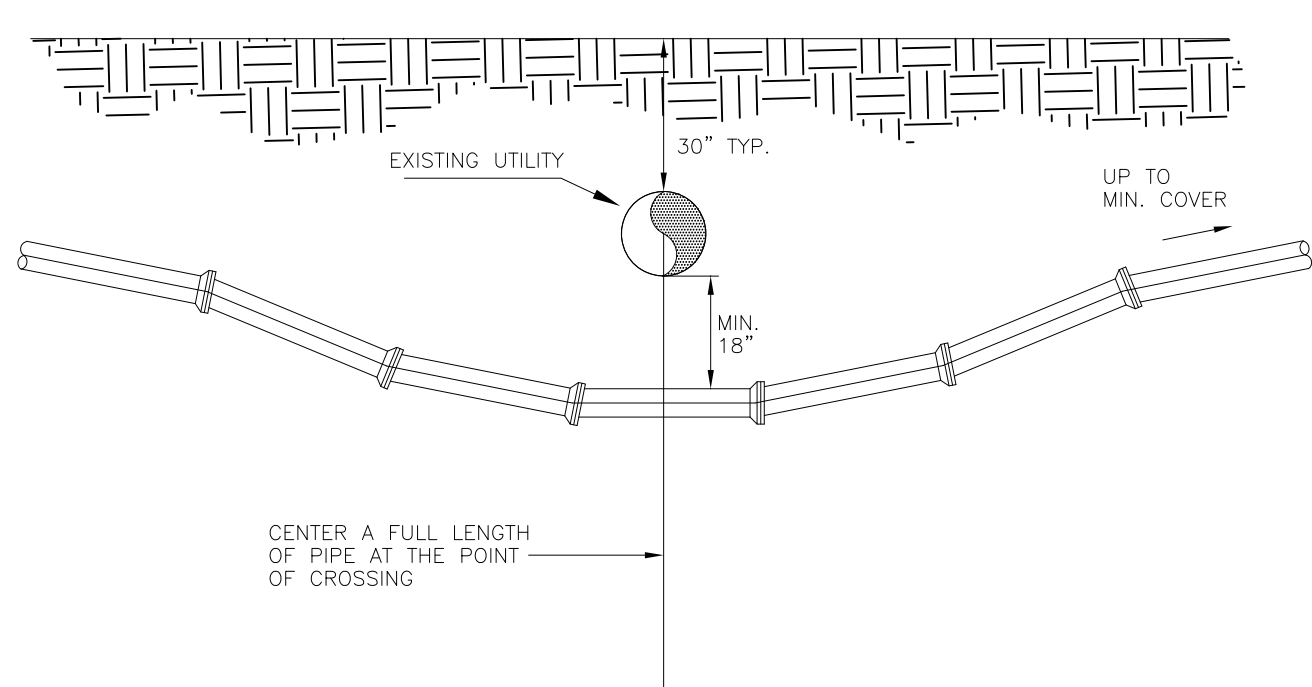
SERVICE REQUIRING ROAD CROSSING



SERVICE NOT REQUIRING ROAD CROSSING

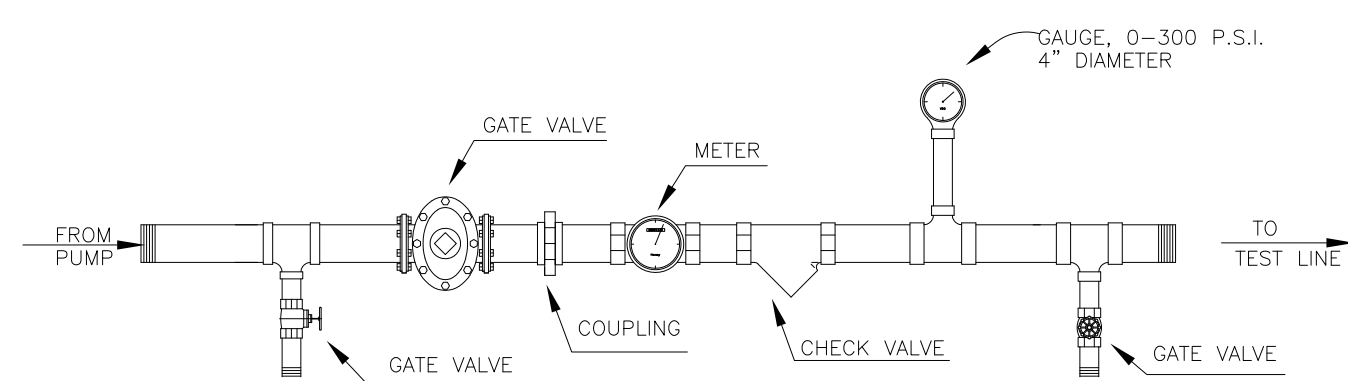


UTILITY CROSSING - FITTING TYPE

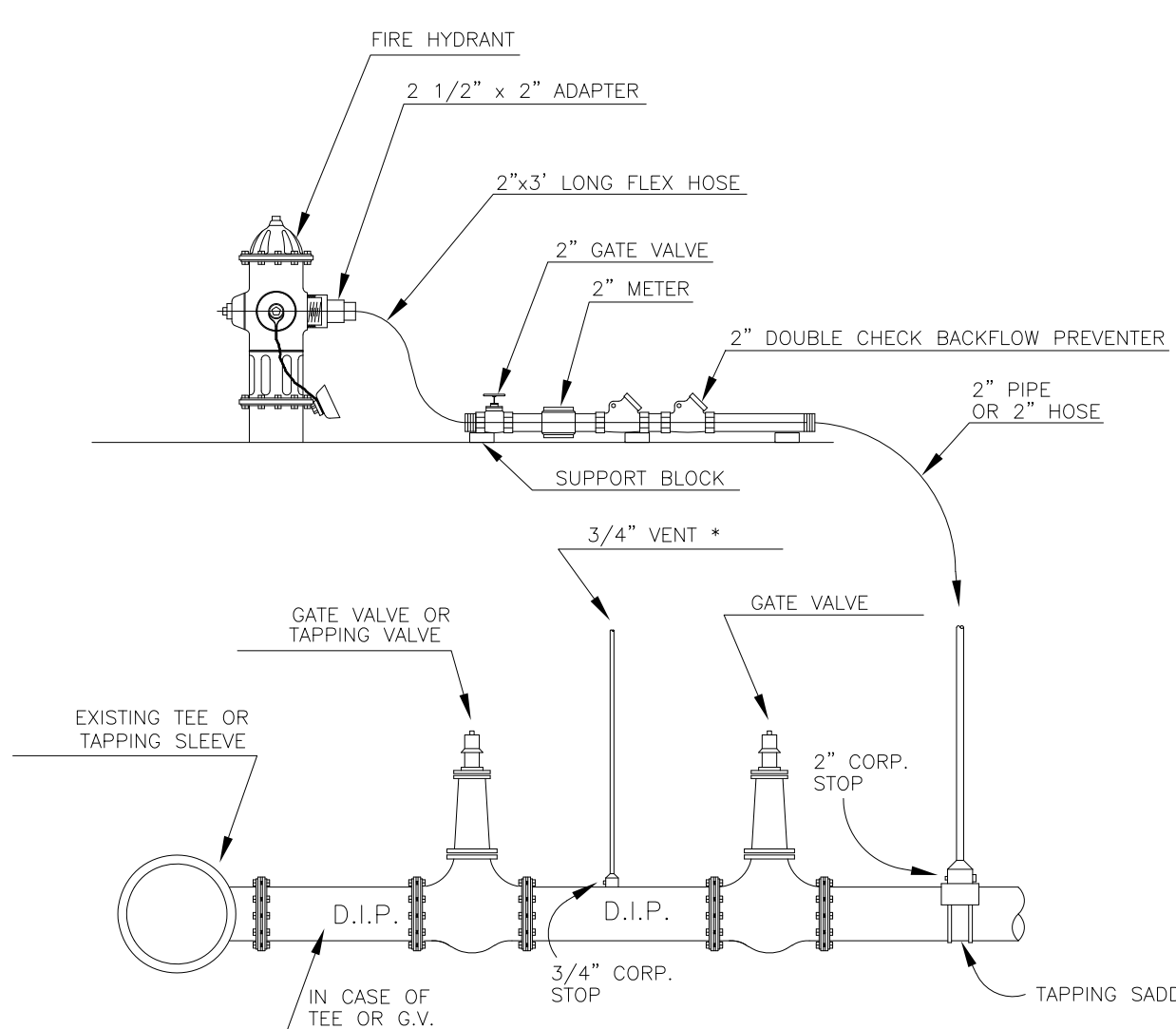


1. THE DEFLECTION TYPE CROSSING SHALL BE USED WHENEVER POSSIBLE. ONLY UNDER SPECIFIC ORDERS BY THE ENGINEER SHALL THE FITTING TYPE CROSSING BE ALLOWED.
2. CONSTRUCT CROSSING USING 75% OF MANUFACTURERS MAXIMUM JOINT DEFLECTION (MAXIMUM).

UTILITY CROSSING - DEFLECTION



PRESSURE TEST

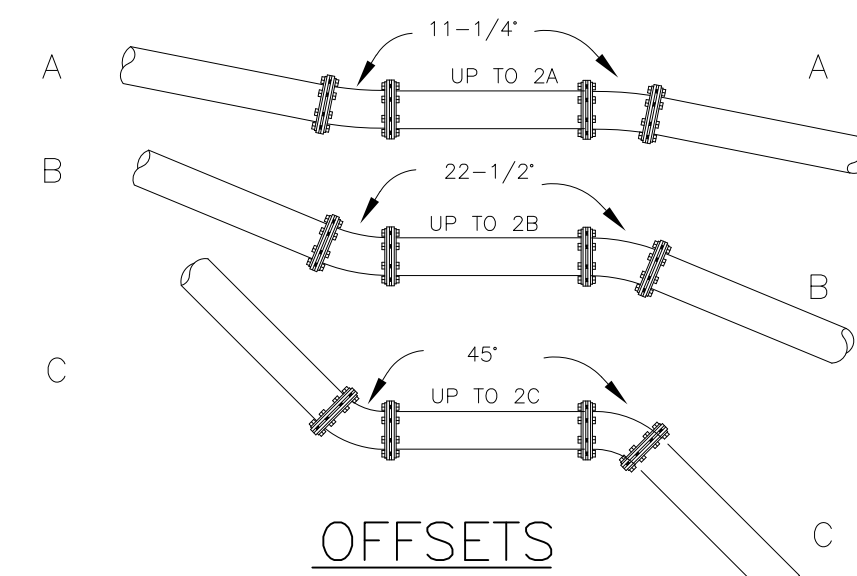


FILLING CONNECTION

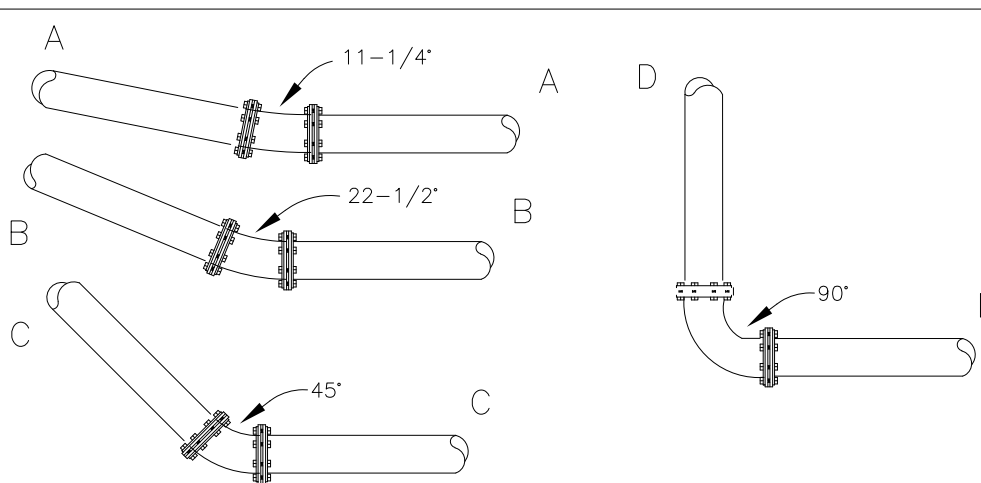
* NOTE: AFTER TESTS REMOVE 3/4" TUBING AND 2" GALVANIZED PIPE AND INSTALL PLUGS ON CORPORATION STOPS.

RESTRAINED PIPE

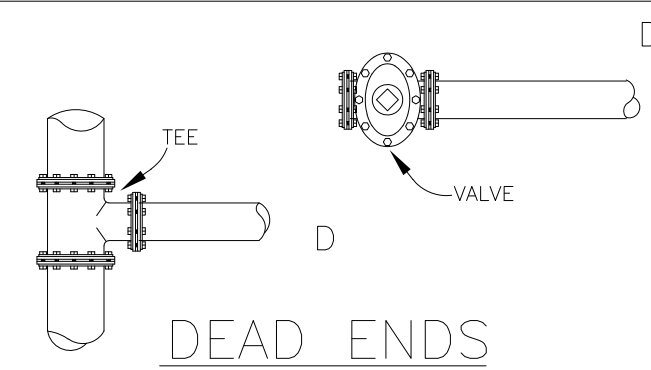
SIZE	DISTANCE IN FEET			
	A & B	C	D	
4"	18	18	54	
6"	18	18	72	
8"	18	36	90	
10"	18	36	108	
12"	18	36	126	
14"	18	54	144	
16"	18	54	162	
18"	18	54	180	
20"	18	72	198	
24"	18	72	216	



OFFSETS

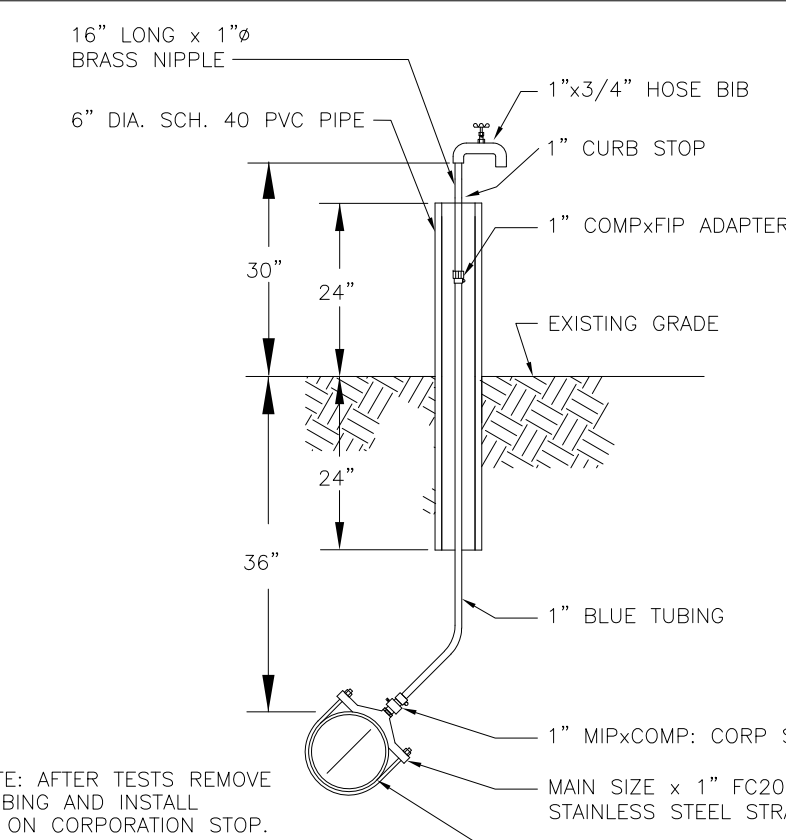


DEFLECTIONS

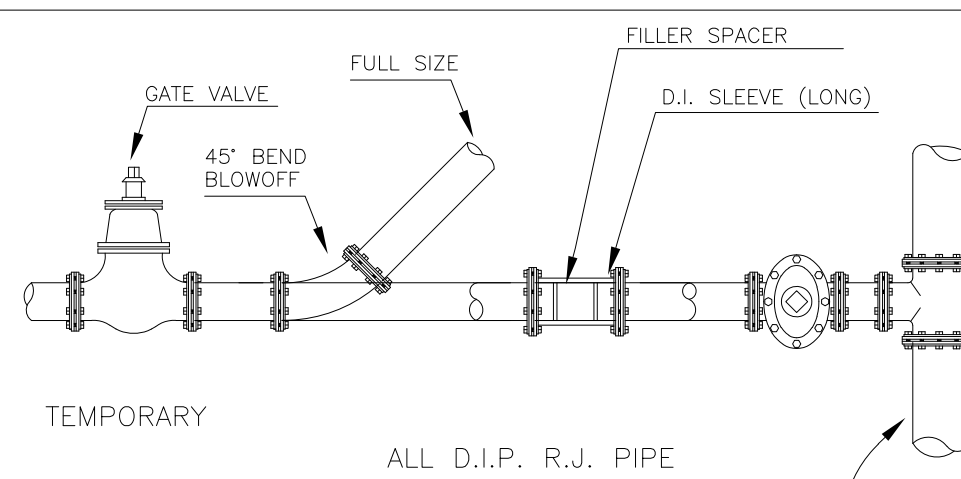


DEAD ENDS

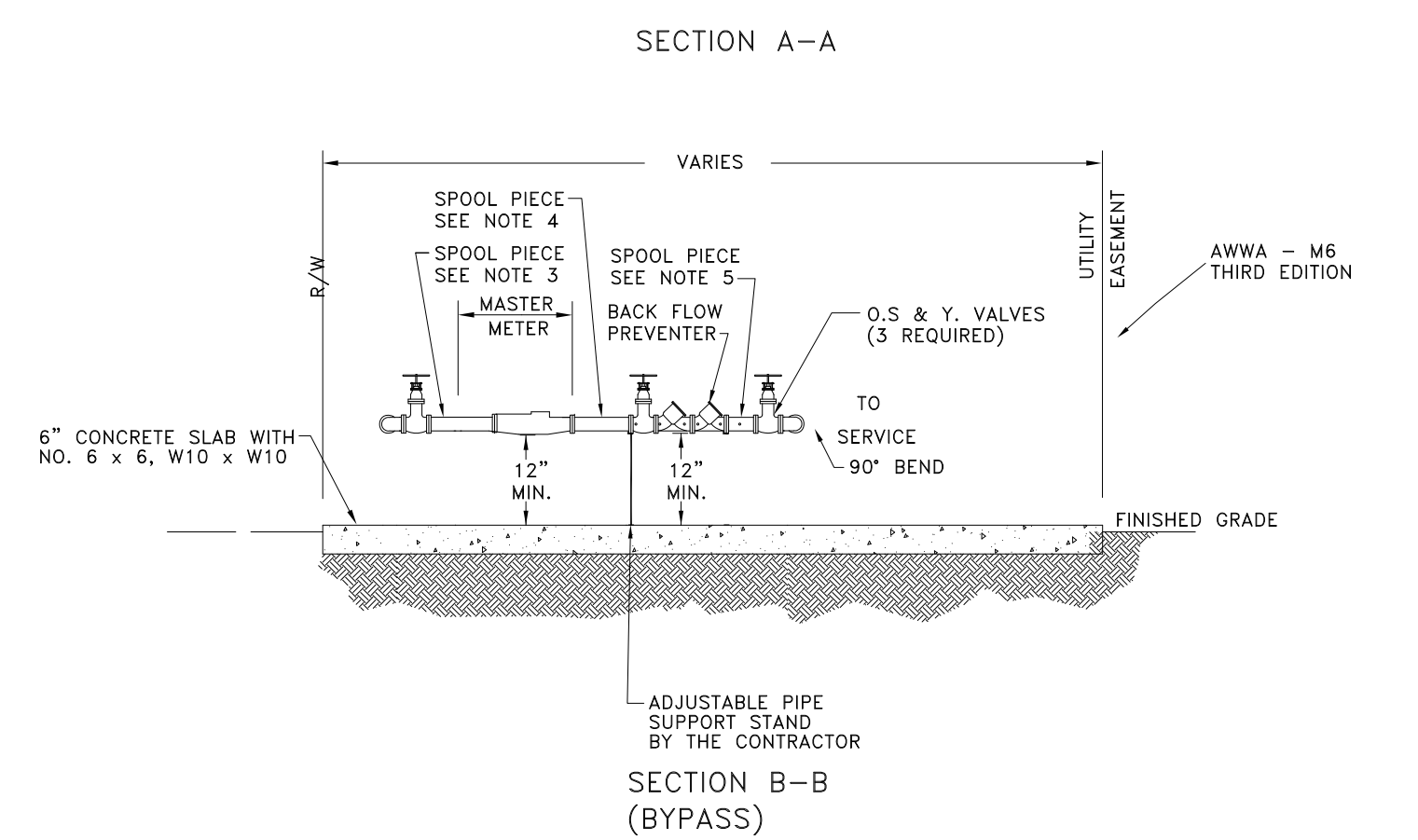
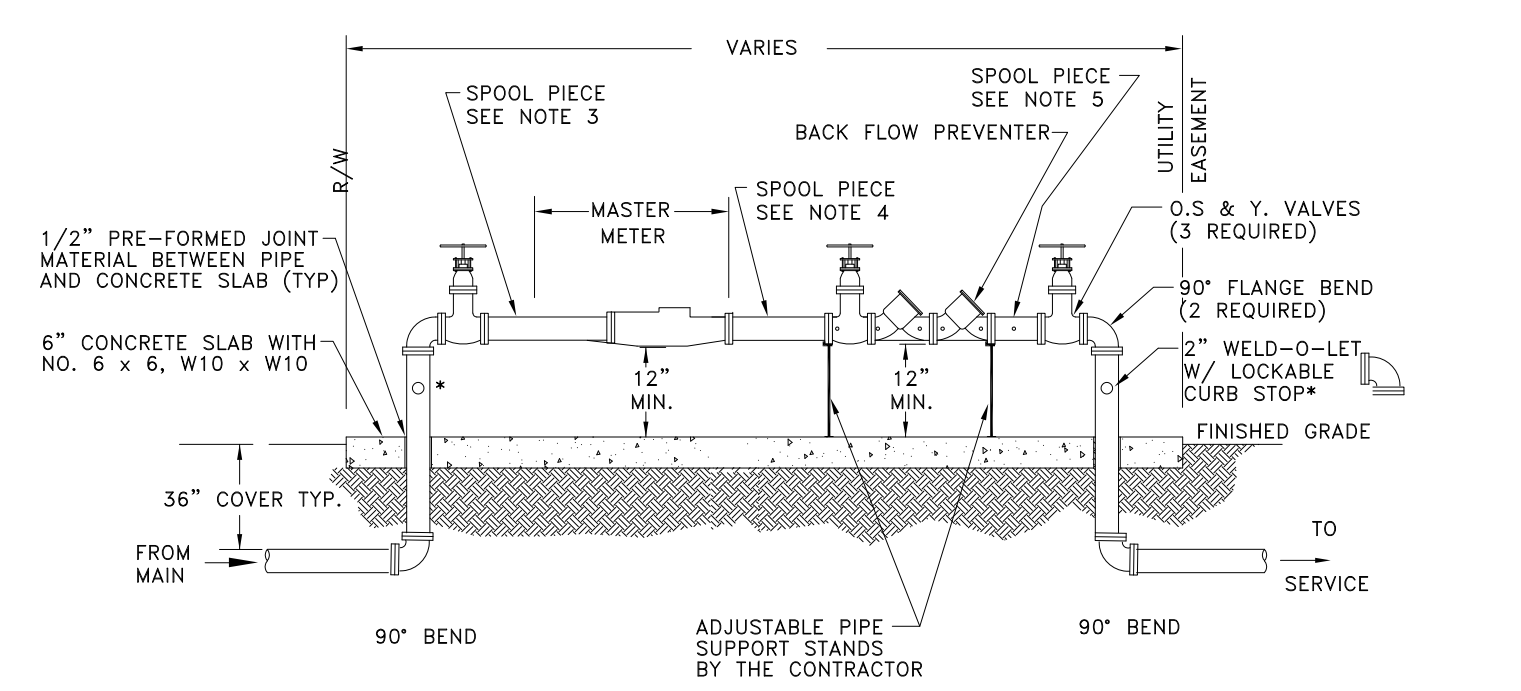
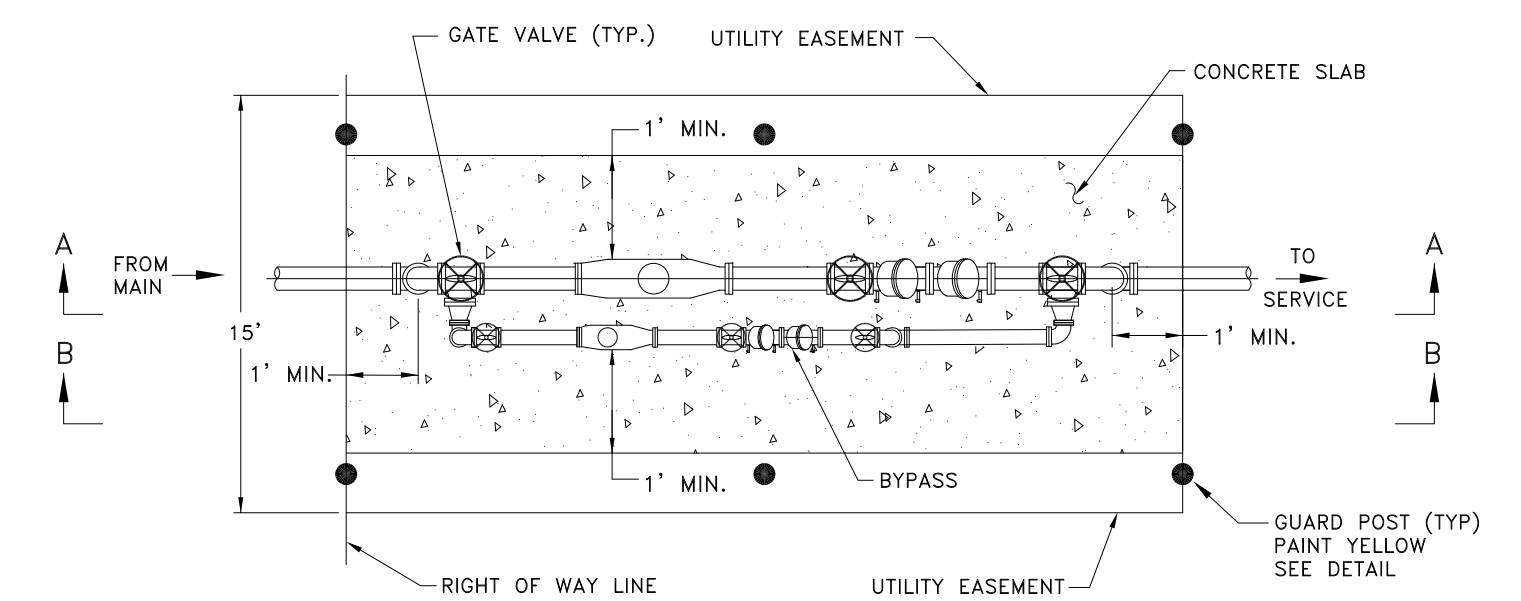
RESTRAINED PIPE



TYPICAL BACTERIOLOGICAL SAMPLING POINT AT INTERMEDIATE POINTS

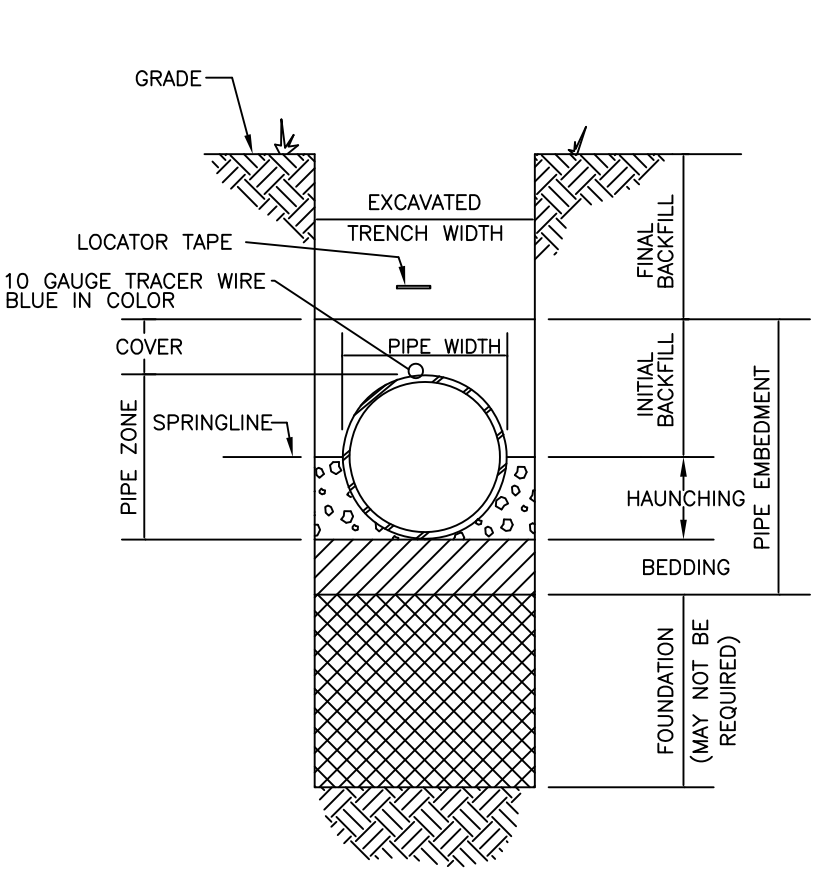


FLUSHING CONNECTION AND BLOW OFF DETAIL

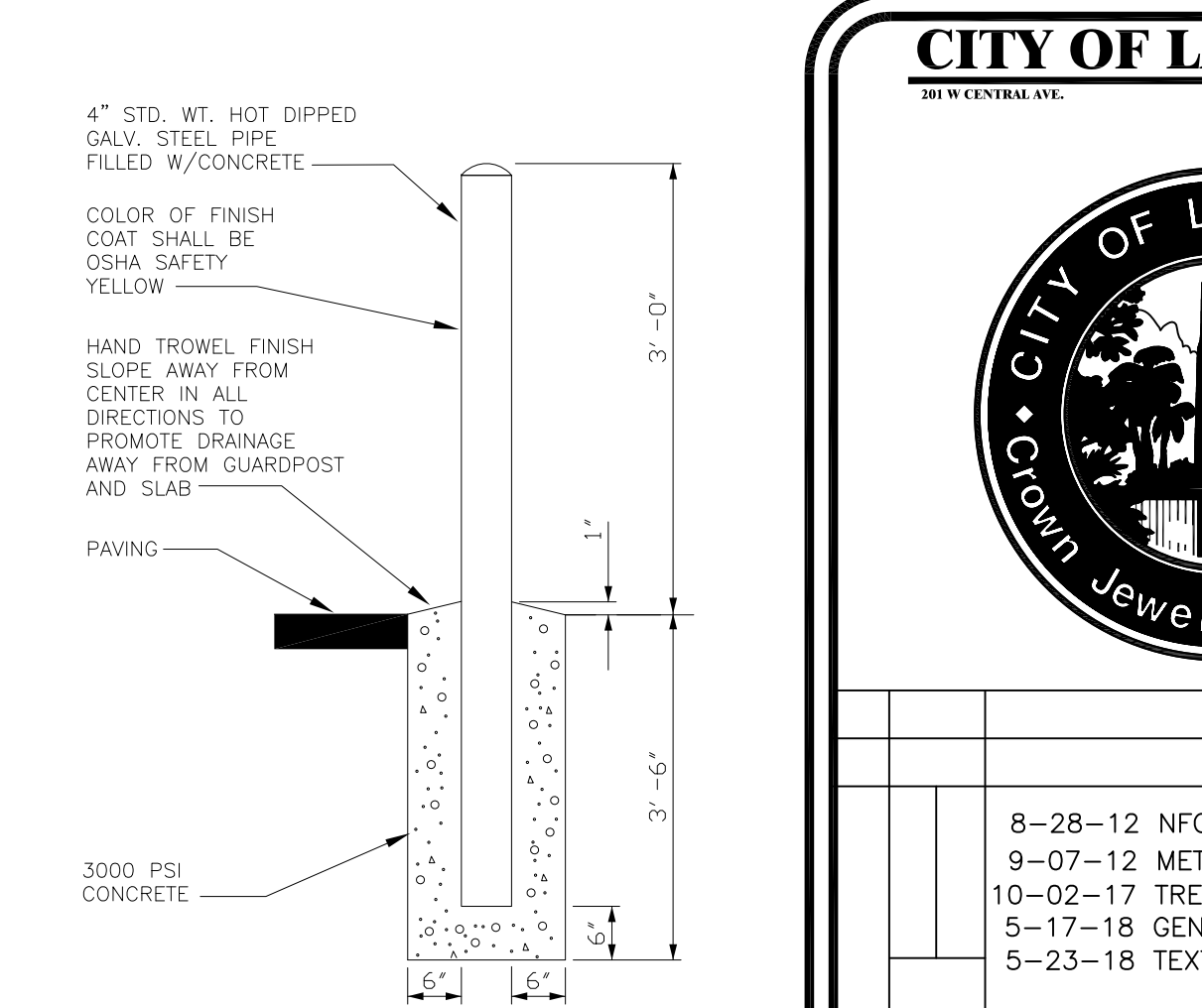


- NOTES:
1. ALL PIPE, FITTINGS, APPURTENANCES, METER AND BACKFLOW PREVENTER SHALL BE FURNISHED AND INSTALLED BY THE CONTRACTOR.
 2. ALL ABOVE GROUND PIPE SHALL BE FLANGE DUCTILE IRON.
 3. SPOOL PIECE MINIMUM LENGTH SHALL BE TEN TIMES THE PIPE DIAMETER.
 4. SPOOL PIECE MINIMUM LENGTH SHALL BE FIVE TIMES THE PIPE DIAMETER.
 5. SPOOL PIECE LENGTH SHALL BE A MINIMUM OF ONE FOOT, ON SPOOL PIECE PLACE A 2" HEAVY DUTY WELD-O-LET NINETY DEGREES FROM THE TOP OF SPOOL PIECE. WELD-O-LET TO BE INSTALLED WITH A LOCKABLE CURB STOP (TEST PORT).
 6. MASTER METER SHALL BE SENSUS COMPOUND FLOW METER.
 7. METER SHALL BE PAINTED BLUE WHEN COMPLETED EXCEPT FOR BRASS.

MAIN METER ASSEMBLY 4" AND LARGER



TRENCH CROSS-SECTION TERMINOLOGY



GUARDPOST DETAIL

ISSUE CODE
 MODIFIED: MJC 05-17-18
 MODIFIED: MJC 05-23-18

CITY OF LAKE WALES
 200 W CENTRAL AVE. LAKE WALES, FLORIDA 33853

8-28-12 NFG TEST BOX
 9-07-12 METER DETAIL ON SERVICES
 10-02-17 TRENCH CROSS-SECTION TERM.
 5-17-18 GENERAL CLEANUP
 5-23-18 TEXT HEIGHT IN TRENCH DETAIL

ISSUE CODE	A PRELIMINARY	B DESIGN
C BIDS	D CONSTRUCTION	E APPROVAL
DESIGN:	SCALE: N.T.S.	
CHK'D BY:	DATE:	
DRAWN BY:	ENGR. APPR.	
DRAWING TITLE		
WATER DETAILS		
AREA	JOB NO.	
CITY-OF-LAKE-WALES		
SHEET	REV.	

- OF -